

# **SOUTHWEST TUC** **DIRECTORY**



# Supporting workers since 1921.

We only work for employees, never employers.

Ensuring we only work for those who need us the most,  
not those who could pay us the most.



For more information about Thompsons  
call 0808 100 8050 or visit [www.thompsons.law.co.uk](http://www.thompsons.law.co.uk)



THE MOST EXPERIENCED  
TRADE UNION FIRM IN THE UK

Thompsons Solicitors is a trading name of Thompsons Solicitors LLP  
and is regulated by the Solicitors Regulation Authority.

# SOUTHWEST TUC DIRECTORY

WELCOME to the South West TUC Directory. The unions listed here represent around half a million members in the South West, covering every aspect of working life. The agreements unions reach with employers benefit many thousands more.

Unions provide a powerful voice at work, a wide range of services and a movement for change in these hard times of austerity and cut backs.

Unions champion equal opportunities, promote learning and engage with partners to develop a sustainable economy for the South West.

The TUC General Council has agreed five core campaign priorities and these will drive the work of the South West TUC for the period ahead.

Jobs and growth  
Fair pay and a living wage  
Good public services and decent welfare  
Respect and a voice at work  
Strong unions

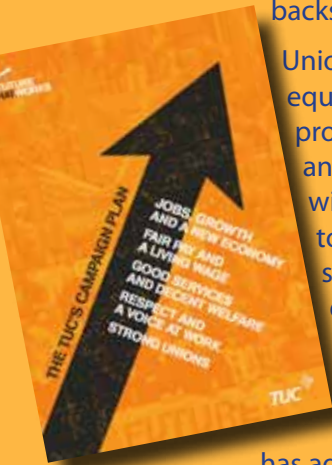
The South West TUC is keen to work with other campaign groups that share these aims and values. This Directory highlights some of those bodies that we work with.

West Country workers are facing a miserable squeeze on incomes whilst pay at the top continues to soar. Public services are being cut and privatised and rights at work attacked.

There is a lot to do and the key is to build strong unions to speak up for people at work. The world of unions can be complicated and this Directory will be a useful guide.

## Nigel Costley

South West TUC Regional Secretary  
[ncostley@tuc.org.uk](mailto:ncostley@tuc.org.uk)

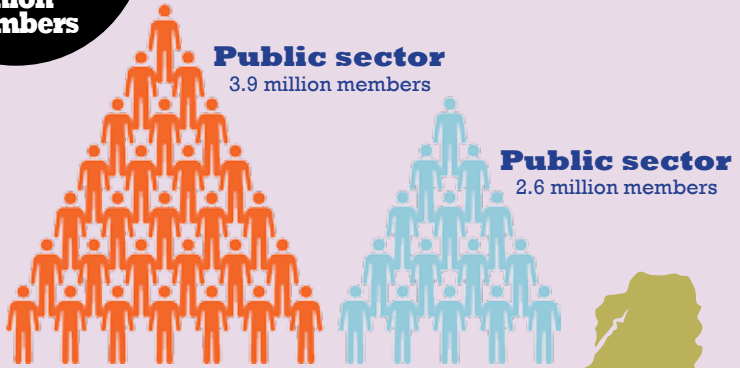


# Union members today

**6.4**  
million  
union  
members

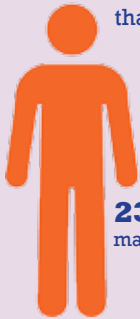
## Union membership

Over a quarter of the UK workforce



## Union density

Women are more likely to be in a union than men



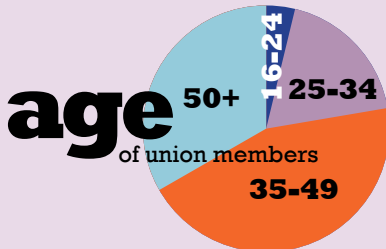
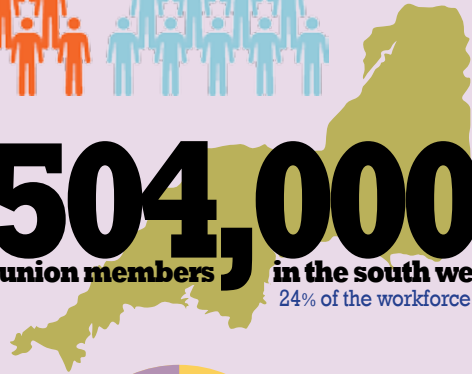
**23%**  
male



**29%**  
female

**504,000**  
union members

in the south west  
24% of the workforce



**18%** of union members are **disabled workers** compared to **14%** for all workers



# SOUTHWESTTUC EXECUTIVE



Chair  
**Richard  
Capps**

## South West TUC Executive

**Romanus Amaefule** – CWU  
**Bev Anderson** – Weston and North Somerset TUC  
**Diana Beale** – Unite  
**Kevin Beazer** – CWU  
**Phil Bialyk** – RMT  
**Brian Blatchford** – Unite  
**Belinda Burton** – Unison  
**Dave Chapple** – Bridgwater TUC  
**Catherine Craig** – PCS  
**Kye Dudd** – CWU  
**Jennifer Fivash** – UNISON  
**Alison Goodman** – Salisbury

## South West TUC

Church House, Church Road,  
Filton, Bristol BS34 7BD  
t 0117 947 0521  
f 0117 947 0523  
southwest@tuc.org.uk  
www.tuc.org.uk/southwest  
twitter: @swtuc

Regional Secretary

**Nigel Costley** ncostley@tuc.org.uk

Secretary

**Tanya Parker** tparker@tuc.org.uk

Low Pay Project Worker

**Kit Leary** kleary@tuc.org.uk

twitter: @fairPaySW

and District TUC

**Agnes Hildich** – Unite  
**Gary Jacobs** – CWU  
**Phil Jordan** – FBU  
**Terry Keefe** – Unite  
**Mark Kinsey** – Weston and North Somerset TUC  
**Tim Lezard** – NUJ  
**Jon Lock** – Unite  
**Maureen Loxley** – USDAW  
**Mark McSheehy** – Unison  
**Sue Milestone** – Unite  
**Linda Moore** – GMB  
**Sue Nash** – Unison  
**Andy Newman** – GMB  
**Tanya Palmer** – Unison  
**Andy Robertson** – TUCJCC  
**Kev Terry** – Unite  
**Jayne Taylor** – Unite  
**Kathy Wallis** – NASUWT  
**Helen Willis** – Unison  
**Andy Woolley** – NUT



Vice-chair

**Rosie MacGregor**

White Horse (Wilts) Trades Union Council

# TOLPUDDLEMARTYRS



In 1834 six farm workers were sentenced to seven years' transportation for daring to form a legal union. The fledgling trade union movement rose to the challenge and organised a massive campaign that forced the government to grant free pardons and a return home in triumph for the Tolpuddle Martyrs.

The story of the farm workers and the protest was a key episode in the foundation of human rights and the development of trade unions. It is remembered at the TUC Museum in Tolpuddle and at the annual festival held the weekend of the third Sunday in July.



## **Tolpuddle Martyrs' Museum and Cottages**

Tolpuddle, Dorchester DT2 7EH

t 01305 848237

f 01305 849037

tolpuddle@tuc.org.uk

[www.tolpuddlemartyrs.org.uk](http://www.tolpuddlemartyrs.org.uk)

twitter: @tolpuddlefest

Manager **Jan Pickering**

jpickering@tuc.org.uk

Assistant **Jane Brooke**

jbrooke@tuc.org.uk



# SOUTHWEST TRADE UNIONS



The Lloyds Banking Group union  
[www.accord-myunion.org](http://www.accord-myunion.org)  
Simmons House, 46 Old Bath Road,  
Charvil, Reading RG10 9QR  
0118 9341808  
[info@accordhq.org](mailto:info@accordhq.org)  
*twitter: @gednichols*  
Officer for South West  
**Fran O'Dowd**  
[fran.o'dowd@accordhq.org](mailto:fran.o'dowd@accordhq.org)



All staff employed in Santander  
businesses in the UK  
[www.advance-union.org](http://www.advance-union.org)  
2nd Floor, 16-17 High Street, Tring,  
Herts HP23 5AH  
01442 891122  
[info@advance-union.org](mailto:info@advance-union.org)  
General Secretary **Linda Rolph**



**Association of Educational  
Psychologists**  
Professional association and trade union  
for Educational Psychologists  
[www.aep.org.uk](http://www.aep.org.uk)  
4 The Riverside Centre, Frankland Lane,  
Durham DH1 5TA  
0191 384 9512  
[enquiries@aep.org.uk](mailto:enquiries@aep.org.uk)  
Regional Officer South  
**Morag Farley**  
[Morag.Farley@aep.org.uk](mailto:Morag.Farley@aep.org.uk)

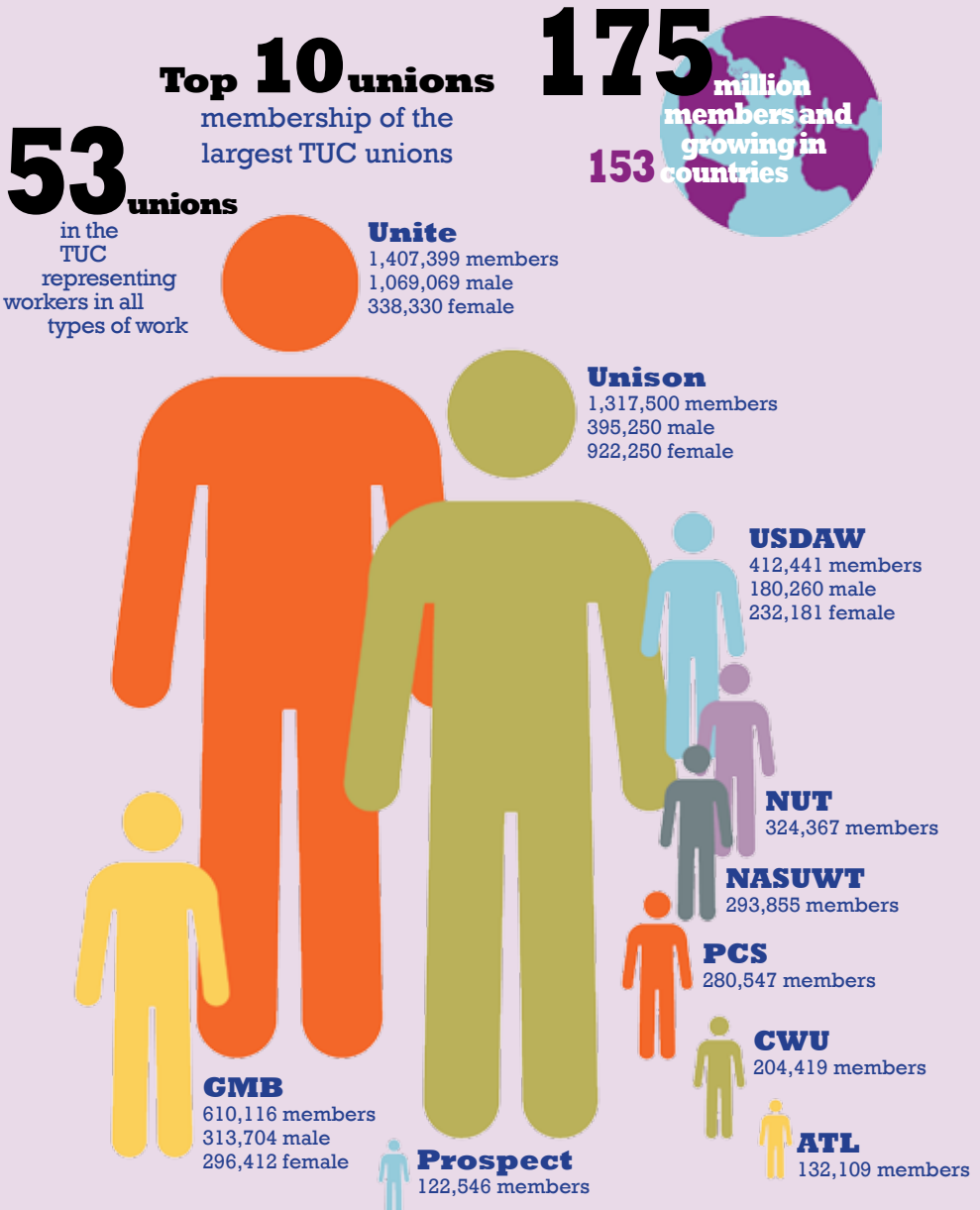


**Associated Society of Locomotive  
Engineers and Firemen**  
Railway drivers, operational supervisors  
and staff  
[www.aslef.org.uk](http://www.aslef.org.uk)  
18 Coedwig Place, Gendros,  
Swansea SA5 8DT  
07900 998683  
District Organiser **Stan Moran**  
[smoran@aslef.org.uk](mailto:smoran@aslef.org.uk)



**Association of Teachers and  
Lecturers**  
Teachers, headteachers, lecturers and  
teaching support staff in nursery,  
primary, secondary schools, sixth-form  
and further education colleges  
[www.atl.org.uk](http://www.atl.org.uk)  
7 Northumberland Street,  
London WC2N 5RD  
020 7930 6441  
[info@atl.org.uk](mailto:info@atl.org.uk)  
*twitter: @ATLUnion*  
General Secretary **Dr Mary Bousted**  
South West Senior Organiser  
**Helen Martin**  
[hmartin@atl.org.uk](mailto:hmartin@atl.org.uk) 07918 741049  
South West Senior Regional Officer  
**Rachel Curley** [rcurley@atl.org.uk](mailto:rcurley@atl.org.uk)  
01453 764931

# State of the unions







### **British Association of Colliery Management**

Technical, Energy and Administrative Management

[www.bacmteam.org.uk](http://www.bacmteam.org.uk)

Edwinstowe House Edwinstowe

Nottinghamshire NG21 9PR

01623 821510

[gs@bacmteam.org.uk](mailto:gs@bacmteam.org.uk)

General Secretary **Patrick Carragher**



### **British Airline Pilots' Association**

Airline pilots, winchmen and flight engineers (commercial)

[www.balpa.org](http://www.balpa.org)

Balpa House, 5 Heathrow Boulevard, 278

Bath Road, West Drayton UB7 ODQ

020 8476 4000

[balpa@balpa.org](mailto:balpa@balpa.org)

*twitter:* @BALPApilots

General Secretary

**Jim McAuslan**



### **British Dietetic Association**

The science and practice of dietetics in the private and public sector

[www.bda.uk.com](http://www.bda.uk.com)

5th Floor, Charles House,

148-9 Great Charles Street, Queens Way, Birmingham B3 3HT

0121 200 8021

[tusecretary@bda.uk.com](mailto:tusecretary@bda.uk.com)



### **BECTU Broadcasting, Entertainment, Cinematograph and Theatre Union**

Broadcasting, film, digital and online media, theatre, cinema and related sectors

[www.bectu.org.uk](http://www.bectu.org.uk)

373-377 Clapham Road, London SW9 9BT

020 7346 0900

[info@bectu.org.uk](mailto:info@bectu.org.uk)

*twitter:* @bectu

General Secretary **Gerry Morrissey**

### **Devon and Cornwall**

Unite House, Rooms 217-218,

1 Cathedral Road, Cardiff CF11 9SD

02920 666557

National Officer **David Donovan**

[ddonovan@bectu.org.uk](mailto:ddonovan@bectu.org.uk)



### **Bakers, Food and Allied Workers' Union**

[www.bfawu.org](http://www.bfawu.org)

### **South Wales and South West**

19a West Bute Street, The Courtyard,

The Docks, Cardiff CF10 5EP

02920 481518

*twitter:* @BFAWU

Regional Officer **Dave Dash**

[dave.dash@bfawu.org](mailto:dave.dash@bfawu.org)

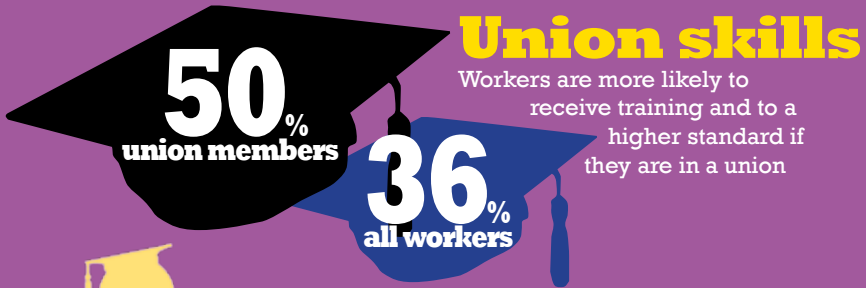
07739326003



### **British Orthoptic Society Trade Union**

[www.orthoptics.org.uk](http://www.orthoptics.org.uk)

## Proportion of workers with higher education qualifications



## Professionals

35% of workers with a degree or higher education qualification are in a trade union compared with 16% who have no qualifications.



## Union premium

How much more workers earn if they are in a trade union



62 Wilson Street, London EC2A 2BU  
01353 665541



### **Britannia Staff Union**

Finance sector union representing staff working in Co-operative Banking Groups and its group of companies

[www.britanniasu.org.uk](http://www.britanniasu.org.uk)

Court Lodge, Leonard Street, Leek, Staffordshire ST13 5JP

01538 399627

[bsu@themail.co.uk](mailto:bsu@themail.co.uk)

General Secretary **John Stoddard**

South West Rep **Christine Bennett**

[Christine.bennett@britannia.co.uk](mailto:Christine.bennett@britannia.co.uk)

01823 337667



### **Community**

Industries in and around steel and metal, textiles, footwear and leather, betting, shoes and social care

[www.community-tu.org](http://www.community-tu.org)

Pembroke House, 20 Cathedral Road, Cardiff CF11 9LJ

029 2066 8800

[region5@community-tu.org](mailto:region5@community-tu.org)

*twitter:* @CommunityUnion

Campaign Manager **Rob Edwards**

[redwards@community-tu.org](mailto:redwards@community-tu.org)

077391 99222

South West Campaign Manager

**Lorraine Gaskell**

[lgaskell@community-tu.org](mailto:lgaskell@community-tu.org)

South West Campaign Administrator

**Pat Clements**



### **Chartered Society of Physiotherapy**

The Chartered Society of Physiotherapy is the professional, educational and trade union body for the country's 47,000 chartered physiotherapists, physiotherapy students and assistants.

[www.csp.org.uk](http://www.csp.org.uk)

14 Bedford Row, London WC1R 4ED

020 7306 6666

[enquiries@csp.org.uk](mailto:enquiries@csp.org.uk)

*twitter:* @thecsp

South West Rep **Andy Ballard**

[ballarda@csp.org.uk](mailto:ballarda@csp.org.uk)

0207 306 1129



### **Communication Workers Union**

Royal Mail Group and other Mail/Parcel distribution and logistic companies, BT, O2, and other telecoms companies, Cable TV, Accenture HR Services, Capita, Santander and other related industries

[www.cwu.org.uk](http://www.cwu.org.uk)

20 Church Road, Lawrence Hill, Bristol BS5 9JA

0117 935 0055

[southwestregion@cwu.org](mailto:southwestregion@cwu.org)

*twitter:* @CWUnews

Regional Secretary **Kevin Beazer**

Regional Chair **Francis Banks**



Performance workers in theatre, film television, radio and variety

[www.equity.org.uk](http://www.equity.org.uk)

Transport House, 1 Cathedral Road,  
Cardiff CF11 9SD  
02920 397971  
[southwestengland@equity.org.uk](mailto:southwestengland@equity.org.uk)  
*twitter:* @EquityUK

Regional Organiser **Simon Curtis**  
Organising Assistant **Mair James**



### **Fire Brigades Union**

[www.fbu.org.uk](http://www.fbu.org.uk)

[www.southwestfbu.com](http://www.southwestfbu.com)

South West Region  
158 Muller Road, Horfield, Bristol BS7 9RE  
0117 935 5132  
*twitter:* SouthWestFBU

Regional Secretary **Phil Jordan**  
[phil.jordan@fbu.org.uk](mailto:phil.jordan@fbu.org.uk)



The union of choice for senior managers  
and professionals in public service

[www.fda.org.uk](http://www.fda.org.uk)

8 Leake Street, London SE1 7NN  
020 7401 5555  
[info@fda.org.uk](mailto:info@fda.org.uk)  
General Secretary **Dave Penman**



Britain's General Union  
Public services - local government,  
school support staff, care, NHS and

education; also security, civil air  
transport, food production, distribution,  
retail, energy, utilities, catering,  
construction, shipbuilding, aerospace,  
defence, engineering, chemicals, leisure,  
textiles and clothing

[www.gmb.org.uk](http://www.gmb.org.uk)

### **Wales and South Western Region Regional Office**

Williamson House, 17 Newport Road,  
Cardiff CF24 OTB  
02920 491260

Covers: Gloucestershire, Somerset,  
Devon, Cornwall and former Avon  
[www.gmbwalesandsouthwest.org.uk](http://www.gmbwalesandsouthwest.org.uk)

Regional Secretary **John Phillips**  
[john.phillips@gmb.org.uk](mailto:john.phillips@gmb.org.uk)

Education Officer **Nick Hughes**  
[nick.hughes@gmb.org.uk](mailto:nick.hughes@gmb.org.uk)

Education Assistant **Melanie Stamp**  
[melanie.stamp@gmb.org.uk](mailto:melanie.stamp@gmb.org.uk)

Race and Women's Equality Officer  
**Ruth Bennett**  
[ruth.bennett@gmb.org.uk](mailto:ruth.bennett@gmb.org.uk)

Regional Political Officer **Mike Payne**  
[Mike.Payne@gmb.org.uk](mailto:Mike.Payne@gmb.org.uk)

Senior Organiser for the Organising  
Department **Mervyn Burnett**  
[mervyn.burnett@gmb.org.uk](mailto:mervyn.burnett@gmb.org.uk)

Senior Organiser for Commercial  
Services **Ruth Bennett**  
[ruth.bennett@gmb.org.uk](mailto:ruth.bennett@gmb.org.uk)

### **Cornwall Area Office**

The Old Art School, Clinton Road,  
Redruth TR15 2QE  
01209 213950

Organiser  
**Chris Jeffery** [chris.jeffery@gmb.org.uk](mailto:chris.jeffery@gmb.org.uk)

### **Devon Area Office**

1st Floor Offices, Sandon Court, 1 Craigie Drive, The Millfields, Plymouth PL1 3JB  
01752 660219

Senior Organiser **Stuart Fegan**  
Stuart.Fegan@gmb.org.uk

Organisers

**Katherine Darcy**

Katherine.Darcy@gmb.org.uk

**Kevin Mason** Kevin.Mason@gmb.org.uk

**Kevin Norman**

Kevin.Norman@gmb.org.uk

Project Worker

**Jude Lazar** jude.lazar@gmb.org.uk

**Bristol Office**

4 Hide Market, Waterloo Street,  
Bristol BS2 0BH  
0117 955 4470

Senior Organiser **Martin Hird**  
martin.hird@gmb.org.uk

Membership Development Officer

**Rowena Hayward**

Rowena.hayward@gmb.org.uk

Organisers

**Adie Baker** adie.baker@gmb.org.uk

**Tony Dowling** tony.dowling@gmb.org.uk

**Wayne Powell**

wayne.powell@gmb.org.uk

**Southern Region**

covers: Dorset and Wiltshire

[www.gmb-southern.org.uk](http://www.gmb-southern.org.uk)

Cooper House, 205 Hook Road,  
Chessington, Surrey KT9 1EA  
020 8397 8881

info@gmb.org.uk

Regional Secretary **Paul Maloney**

Paul.maloney@gmb.org.uk

Regional Education Officer **Alan Fraser**

Alan.Fraser@gmb.org.uk

Senior Organiser - Organisation and Membership **Mark Wilkinson**  
Mark.Wilkinson@gmb.org.uk

Organiser - Organisation and Membership **Donna Dowling**  
Donna.Dowling@gmb.org.uk

Project Manager

**Phil Caiels** Phil.Caiels@gmb.org.uk

Project Workers

**Agnieszka Zamonski**

Agnieszka.Zamonski@gmb.org.uk

**Peter Synowiec**

Peter.Synowiec@gmb.org.uk

**Paul Simmonds**

Paul.Simmonds@gmb.org.uk

**South Coast Office**

**Wiltshire and Swindon**

Suite 22, Cherry Orchard North, Kembrey Park, Swindon SN2 8UH  
01793 818005

Senior Organiser **Kevin Brandstatter**  
Kevin.Brandstatter@gmb.org.uk

Organiser **Asia Morasz**

Asia.Morasz@gmb.org.uk

Organising Officer **Carole Vallyelly**

Carole.Vallyelly@gmb.org.uk

**South Coast Office Dorset**

6 Gloster Court, Whittle Avenue,  
Segensworth, Fareham PO15 5SH  
01489 578665

Senior Organiser **Charles Harrity**  
Charles.harrity@gmb.org.uk

Organiser **Anne Chandler**

Anne.Chandler@gmb.org.uk

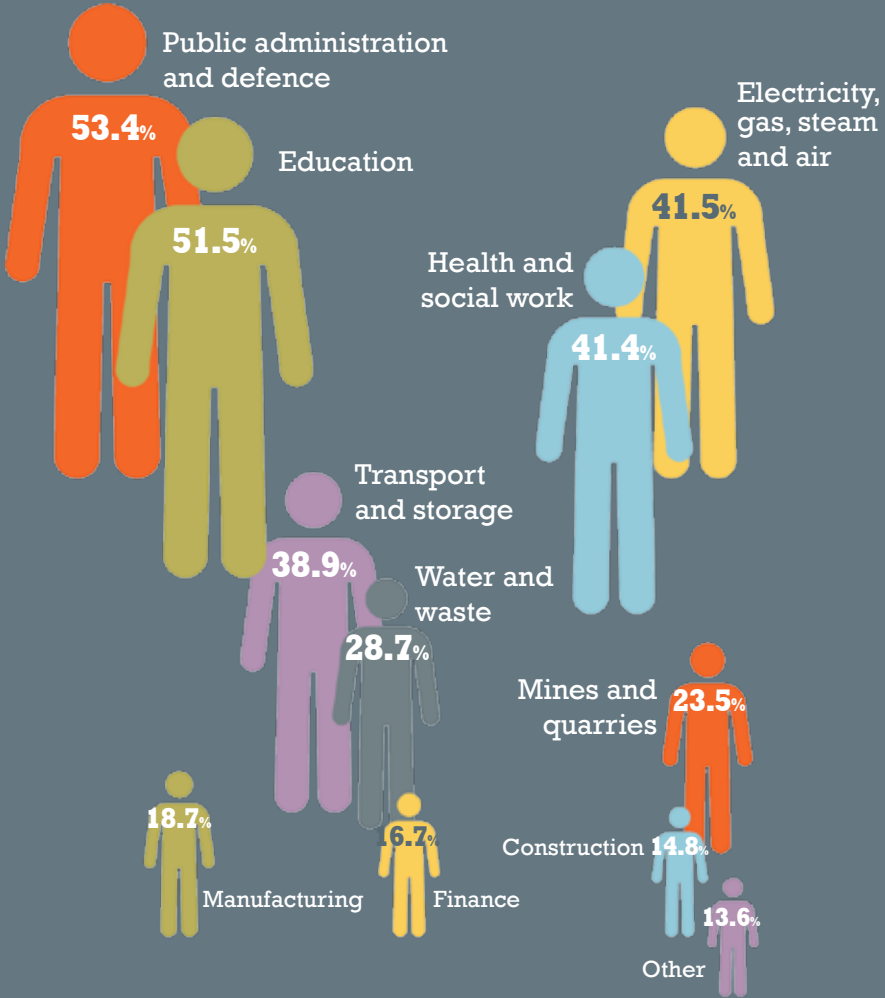
Organiser **Ross Murdoch**

Ross.Murdoch@gmb.org.uk

Organiser **Nicola Nixon**

Nicola.Nixon@gmb.org.uk

# Union density by sector



Source: Trade Union Membership in 2011 BIS Data taken from the Labour Force Survey Office of National Statistics

Workplaces with  
**union safety reps**  
 are  
**50%**  
**safer**  
 than those  
 without



## Hospital Consultants' and Specialists' Association

Hospital consultants, associate specialists, Specialty Doctors, SpR's and staff grades

[www.hcsa.com](http://www.hcsa.com)

1 Kingsclere Road, Overton, Basingstoke, Hants RG25 3JA

01256 771777

General Secretary **Eddie Saville**

[esaville@hcsa.com](mailto:esaville@hcsa.com)

South West Regional Officer **Ian Smith**

[ismith@hcsa.com](mailto:ismith@hcsa.com)

Musicians' Union



## Musicians' Union

Employed and self-employed musicians including live and recording artists, writers, composers and teachers

[www.theMU.org](http://www.theMU.org)

### Wales and South West Region

199 Newport Road, Cardiff CF24 1AJ

02920 456585

[cardiff@theMU.org](mailto:cardiff@theMU.org)

*twitter:* @WeAreTheMU

Regional Organiser **Paul Westwell**

Regional Officer **Paul Gray**



National Association of Co-operative Officials

## National Association of Co-operative Officials

Retail distribution, insurance, dairy industry, funeral services, motor trades (retail), retail pharmacy, travel industry, agriculture

[www.naco.coop](http://www.naco.coop)

6a Clarendon Place, Hyde,

Cheshire SK14 2QZ

0161 351 7900

*twitter:* @NACOTradeunion

General Secretary **Neil Buist**

[nb@nacoco-op.org](mailto:nb@nacoco-op.org)



Probation and Family Courts

[www.napo.org.uk](http://www.napo.org.uk)

4 Chivalry Road, London SW11 1HT

020 7223 4887

[info@napo.org.uk](mailto:info@napo.org.uk)

*twitter:* @Napo\_News

Acting General Secretary **Ian Lawrence**

National Officer for South West

**Nick Smith** [nsmith@napo.org.uk](mailto:nsmith@napo.org.uk)



## National Association of Stable Staff

Represents stable staff employed by licensed race horse trainers

[www.naoss.co.uk](http://www.naoss.co.uk)

Bretby Business Park, Ashby Road, Bretby, Burton upon Trent, Derbyshire DE15 OYZ

01283 211522

[office@naoss.co.uk](mailto:office@naoss.co.uk)

Chief Executive **George McGrath**



## National Association of Schoolmasters' Union of Women Teachers

[www.nasuwt.org.uk](http://www.nasuwt.org.uk)

2 Marlborough Court, Manaton Close, Matford Business Park, Exeter EX2 8PF

01392 822500  
rc-southwest@mail.nasuwt.org.uk  
*twitter:* @nasuwtunion

**South West**

[www.southwestnasuwt.org.uk](http://www.southwestnasuwt.org.uk)

Regional Organiser **Fiona Westwood**  
fiona.westwood@mail.nasuwt.org.uk

Regional Official **Martin Menear**  
martin.menear@mail.nasuwt.org.uk

Professional Assistant **Charlotte Revely**  
Charlotte.revely@mail.nasuwt.org.uk

Professional Assistant **Maree Day**  
maree.day@mail.nasuwt.org.uk



**Nautilus International**

Merchant navy and all related areas  
[www.nautilusint.org](http://www.nautilusint.org)  
1 & 2 the Shrubberies, George Lane,  
South Woodford, London E18 1BD  
020 8989 6677  
enquiries@nautilusint.org  
*twitter:* @nautilusint



General Secretary **Mark Dickinson**  
**Nationwide Group Staff Union**

All staff within the Nationwide Building Society Group, including Nationwide, Dumfermline Building Society and Nationwide International Ltd  
[www.ngsu.org.uk](http://www.ngsu.org.uk)  
Middleton Farmhouse,

37 Main Road, Middleton Cheney,  
Banbury OX17 2QT  
01295 710767  
ngsu@ngsu.org.uk  
General Secretary **Tim Poil**



**National Union of Journalists**

[www.nuj.org.uk](http://www.nuj.org.uk)  
Headland House, 308-312 Gray's Inn  
Road, London WC1X 8DP  
020 7843 3700  
info@nuj.org.uk  
*twitter:* @NUJofficial  
General Secretary **Michelle Stanistreet**



**National Union of Mineworkers**

[www.num.org.uk](http://www.num.org.uk)  
Miners' Offices, 2 Huddersfield Road,  
Barnsley S70 2LS  
01226 215555  
*twitter:* @NUM\_Media

National Secretary **Chris Kitchen**  
chris.kitchen@num.org.uk



**National Union of Teachers**

[www.teachers.org.uk](http://www.teachers.org.uk)  
1 Lower Avenue, Heavitree,  
Exeter EX1 2PR  
01392 258028  
south.west@nut.org.uk



twitter: @NUTonline  
twitter: @NUTSouthWest

Regional Secretary **Andy Woolley**

a.woolley@nut.org.uk

Regional Officers

**Jessica Pearce** j.pearce@nut.org.uk

**Nina Franklin** n.franklin@nut.org.uk

Principal Officer **Anthony Bowes**

a.bowes@nut.org.uk

Senior Organiser **Hannah Packham**

h.packham@nut.org.uk

Casework Support Officers

**Philippa Hogan** p.hogan@nut.org.uk

**Jan Lockwood** j.lockwood@nut.org.uk

Division Support Officers

**Sarah Allen-Melvin**

s.allen-melvin@nut.org.uk

**Reuben Wallace** r.wallace@nut.org.uk

**Nathan Wagstaff** n.wagstaff@nut.org.uk



## **Public and Commercial Services Union**

Government departments and agencies, public bodies, private sector information technology and other service companies

[www.pcs.org.uk](http://www.pcs.org.uk)

First Floor, Quintana Gate, Suite 3,  
Bartholomew Street, Exeter EX4 3BH  
01392 410105

twitter: @pcs\_union

Regional Secretary **Catherine Craig**

cathc@pcs.org.uk

Learning and Education Officer

**Robert Crew** robertc@pcs.org.uk

Regional Union Learning Officer

**Jack Davies** jack@pcs.org.uk



## **Professional Footballers' Association**

[www.givemefootball.com](http://www.givemefootball.com)

20 Oxford Court, Bishopsgate,  
Manchester M2 3WQ

0161 236 0575

info@thepfa.co.uk

twitter: @PFA

Chief Executive **Gordon Taylor** OBE



The professional trade union for prison, correctional and secure psychiatric workers, persons employed in any penal or secure establishment or special hospital as a prison officer, a nursing grade, operational support grade, a non-industrial stores grade and NHS secure forensic staff

[www.poauk.org.uk](http://www.poauk.org.uk)

Cronin House, 245 Church Street,  
London N9 9HW

020 8803 0255

general@poauk.org.uk

General Secretary **Steve Gillan**

South West Regional Rep **John Hancock**

debbie@poauk.org.uk



Engineering, scientific, managerial and professional staff in agriculture,

communications/ICT, defence, electricity supply, energy environment, health and safety, heritage, industry, law and order, shipbuilding, transport  
[www.prospect.org.uk](http://www.prospect.org.uk)  
twitter: @ProspectUnion

### Prospect West

Newminster House, 27-29 Baldwin Street, Bristol BS1 1LT  
0117 929 4441  
National Secretary **Tony Bell**  
tony.bell@prospect.org.uk

Negotiations Officers

#### **John Stevenson**

john.stevenson@prospect.org.uk

#### **Helen Stevens**

helen.stevens@prospect.org.uk

#### **Kevin Warden**

kevin.warden@prospect.org.uk

Regional Organiser **Carol Quinn**

Carol.Quinn@prospect.org.uk

The ASPECT group within Prospect (Association of Professionals in Education and Children's Trusts)

[www.prospect.org.uk](http://www.prospect.org.uk)

Woolley Hall, Woolley, Wakefield, West Yorkshire WF4 2JR

01226 383428

Regional Officer **Jim Crowley**

Jim.crowley@prospect.org.uk

07872 987753



### **National Union of Rail, Maritime and Transport Workers**

Railways and shipping, underground, road freight and passenger transport  
[www.rmt.org.uk](http://www.rmt.org.uk)

### **RMT South Wales and West Region**

Suite 4.4, 111-117 Victoria Street  
Bristol BS1 6AX  
0117 925 5018

Regional Organisers

**Phil Bialyk** p.bialyk@rmt.org.uk

**Brendan Kelly** b.kelly@rmt.org.uk

Recruitment Organiser

**Phil Boston** p.boston@rmt.org.uk

Relief Organisers

**Peter Skelly** p.skelly@rmt.org.uk

**Brian Whitehead**

b.whitehead@rmt.org.uk

Regional Administration Manager

**Andy Robertson** a.robertson@rmt.org.uk

Union Learning Development Worker

**Bill Hendy** b.hendy@rmt.org.uk

### **Wessex Region (Wiltshire and Dorset)**

2nd Floor, The Podium, Queens Keep,  
1-4 Cumberland Place,  
Southampton SO15 2BH  
02380 335412

Regional Organiser **Mick Tosh**

m.tosh@rmt.org.uk



### **The Society of Chiropodists and Podiatrists**

[www.feetforlife.org](http://www.feetforlife.org)

1 Fellmongers Path, Tower Bridge Road,  
London SE1 3LY

0845 450 3720

enq@scpod.org

Chief Executive and General Secretary

**Joanna Brown**



## Society of Radiographers

[www.sor.org](http://www.sor.org)

South West England, Wessex  
PO Box 79, Pontypool NP4 4AF  
020 77407215

*twitter:* @SCoRMembers

Regional Officer **Richard Pembridge**  
[richardp@sor.org](mailto:richardp@sor.org)



## Transport Salaried Staff's Association

Administrative, clerical, supervisory, managerial, professional and technical employees of railways, London Underground, buses, road haulage, port authorities and waterways in Great Britain and Ireland. Also employees in the travel trade, hotel and catering industries

[www.tssa.org.uk](http://www.tssa.org.uk)

2nd Floor, Newminster House, 27-29  
Baldwin Street, Bristol BS1 1LT  
020 7529 8002

*twitter:* @TSSAunion

Senior Regional Organiser  
**Alan Valentine** [valentinea@tssa.org.uk](mailto:valentinea@tssa.org.uk)  
07775912829

Regional Organiser  
**Natalie Feeley** [feeley@tssa.org.uk](mailto:feeley@tssa.org.uk)  
07841995810

Community Organiser  
**Rob Jenks** [jenksr@tssa.org.uk](mailto:jenksr@tssa.org.uk)  
07876590551

Organiser

**Mike Wheeler** [wheelerm@tssa.org.uk](mailto:wheelerm@tssa.org.uk)  
07714601771



## Union of Construction, Allied Trades and Technicians

Construction and building  
[www.ucatt.org.uk](http://www.ucatt.org.uk)

Wales and South West  
199 Newport Road, Cardiff CF24 1AJ  
02920 498664

Regional Secretary **Nick Blundell**  
[nblundell@ucatt.org.uk](mailto:nblundell@ucatt.org.uk)

Regional Organiser **Dave Gunter**  
[dgunter@ucatt.org.uk](mailto:dgunter@ucatt.org.uk)

Development Officer **Tim Morris**  
[tmorris@ucatt.org.uk](mailto:tmorris@ucatt.org.uk)

### Plymouth Sub Office

19A Pomphlett Gardens, Pomphlett,  
Plymouth, PL9 7QX  
01752481



## University and College Union

Academic and academic related staff in higher education, further education, adult education, land-based education and prison education  
[www.ucu.org.uk](http://www.ucu.org.uk)

26b Clifton Hill, Exeter EX1 2DJ  
01392 412525  
[exeter@ucu.org.uk](mailto:exeter@ucu.org.uk)

*twitter:* @ucu

Regional Support Officials

**Philippa Davey** pdavey@ucu.org.uk  
**Catriona Scott** cscott@ucu.org.uk

Branch Development Organiser

**David O'Toole** dotoole@ucu.org.uk

Regional Administrator

**Becca Richards** rrichards@ucu.org.uk

**UCU Southern**

104 Albert Road, Southsea,

Hants PO5 2SN

t 023 92818625

southern@ucu.org.uk

Regional Official

**Moray Mcaulay** mmcaulay@ucu.org.uk

Regional Administrator

**Jane Gastrell** jgastrell@ucu.org.uk



Local government, health care, the water, gas and electricity industries, further and higher education, schools, transport, voluntary sector, housing associations, police support staff  
[www.unison.org.uk](http://www.unison.org.uk)

Unison House, The Crescent,

Taunton TA1 4DU

t 0845 355 0845

twitter: @UNISONSW

Regional Secretary **Joanne Kaye**

j.kaye1@unison.co.uk

Regional Manager **Lisa Youlton**

l.youlton@unison.co.uk

Regional Organisers

**Helen Eccles** h.eccles@unison.co.uk

**Liz French** l.french@unison.co.uk

Area Organiser

**Jon Dunn** j.dunn@unison.co.uk

Local Organiser

**Lisa Brown** l.browne@unison.co.uk

Regional Education Officer

**Kay MacKenzie**

k.mackenzie@unison.co.uk

Regional Learning and Development  
Organiser

**Edna Warwick** e.warwick@unison.co.uk

Regional Women's and Equalities Officer

**Vicky Boroughs**

v.boroughs@unison.co.uk

Conference Centre Bookings

**Nina Wilson/Julie Harvey**

n.wilson@unison.co.uk

j.harvey@unison.co.uk

Regional Communications Contact

**Jenn Gollings** j.gollings@unison.co.uk

Unison House, Emperor Way, Exeter

Business Park, Exeter EX1 3QS

0845 3550845

Regional Manager

**Helen Willis** h.willis@unison.co.uk

Regional Organisers

**Fiona Bentley** f.bentley@unison.co.uk

**Chris Dayus** c.dayus@unison.co.uk

**Stuart Roden** s.roden@unison.co.uk

**Karen Williams** k.williams@unison.co.uk

**Claire Jones** c.jones@unison.co.uk

Area Organisers

**Michael Auguste**

m.auguste@unison.co.uk

**Sarah Woodward**

s.woodward@unison.co.uk

**Chris Musgrave**

c.musgrave@unison.co.uk

Local Organisers

**Tom Milburn** t.milburn@unison.co.uk

**Vivienne Brett** v.brett@unison.co.uk

**Simon Wintle** s.wintle@unison.co.uk

1st Floor, Vintry House, Wine Street,  
Bristol BS1 2BD  
0845 3550845

Regional Manager

**Tanya Palmer** t.palmer@unison.co.uk

Regional Organisers

**Gavin Brooks** g.brooks@unison.co.uk

**Christina Cook** c.cook@unison.co.uk

**Simon Newell** s.newell@unison.co.uk

**Tina Green** t.green@unison.co.uk

**Mo Dickson** m.dickson@unison.co.uk

**Judy Wilson** j.wilson@unison.co.uk

Area Organisers

**Mark Phelan** m.phelan@unison.co.uk

**Jayne Jackson** j.jackson@unison.co.uk

Local Organisers

**Karen Davidson**

k.davidson@unison.co.uk

**Siobhan Brown** s.brown@unison.co.uk

**Rose Dunkley** r.dunkley@unison.co.uk

Dorset Resource Centre, Ryan House,  
Sandford Lane Estate, Wareham BH20 4DY  
0845 355 0845

Regional Organisers

**Alan Martin** a.martin@unison.co.uk

**Mike Cracknell**

m.cracknell@unison.co.uk

Area Organiser

**Georgina Cawley**

g.cawley@unison.co.uk

Local Organiser **Debbie Hudson**

d.hudson@unison.co.uk



Administrative, clerical, technical and supervisory; agriculture; building, construction and civil engineering; chemical, oil and rubber manufacture; civil air transport; docks and waterways; food, drink and tobacco; general workers; passenger services; power and engineering; public services; road transport commercial; textiles; vehicle building and automotive, Manufacturing, engineering, energy, construction, IT, defence aerospace, motor industry, civil aviation, chemicals and pharmaceuticals, steel and metals, shipbuilding, scientists, technologists, professional and managerial staff, electronics and telecommunications, tobacco, food and drink, textiles, ceramics, paper, professional staff in universities, commercial sales, the voluntary sector, financial services, and the National Health Service  
[www.unitetheunion.com](http://www.unitetheunion.com)

**Regional Office**

Tony Benn House, Victoria Street,  
Bristol BS1 6AY

0117 9230555

*twitter:* @unitesouthwest

*twitter:* @uniteSWYouth

South West Regional Secretary

**Laurence Faircloth**

laurence.faircloth@unitetheunion.org

Regional Education Officer South West  
and Wales **Glyn Conolly**

Glyn.Conolly@unitetheunion.org

Women's and Equalities Organiser

**Karen Cole**

karen.cole@unitetheunion.org

Regional Learning Manager

**Stephanie Wring**

steph.wring@unitetheunion.org

Learning Project Workers

**Ken Fish** kfish@unitetheunion.org

**Andy Hewlett**

andy.hewlett@unitetheunion.org

**Matt Gillett**

matt.gillett@uniontheunion.org

**Nigel Jones**

nigel.jones@unitetheunion.org

Regional Officers

**Stuart Davies**

stuart.davies@unitetheunion.org

**Malcolm Green**

malcolm.green@unitetheunion.org

**Hugh Kirkbride**

hugh.kirkbride@unitetheunion.org

**Andy McDowall**

andy.mcdowall@unitetheunion.org

**Jerry Pickford**

jerry.pickford@unitetheunion.org

**Steve Preddy**

steve.preddy@unitetheunion.org

**Matt Tipper**

matt.tipper@unitetheunion.org

**Donna Williams**

donna.williams@unitetheunion.org

**Gloucester Area Office**

1 Pullman Court, Great Western Road,

Gloucester GL1 3ND

0845 6048325

Regional Officers

**Trevor Hall**

trevor.hall@unitetheunion.org

**Christine Starling**

christine.starling@unitetheunion.org

**Plymouth Area Office**

2 Harbour Avenue, Sutton Harbour,

Plymouth PL4 0BJ

01752 424129

Regional Officers

**Dave Springbett**

dave.springbett@unitetheunion.org

**Rob Miguel**

rob.miguel@unitetheunion.org

**Mark Richards**

mark.richards@unitetheunion.org

**Cornwall Area Office**

Teddington's, Holmbush Ind. Est.,

St Austell PL25 3HG

01726 76043

Regional Officer

**Laura Sheppard**

laura.sheppard@unitetheunion.org

**Taunton Area Office**

The Barn, Hankridge Way,

Taunton TA1 2LR

01823 442464 f 01823 442508

Regional Officers

**Dorothy Fogg**

dorothy.fogg@unitetheunion.org

**Heathcliffe Pettifer**

heathcliffe.pettifer@unitetheunion.org

**Terry Keefe**

terry.keefe@unitetheunion.org

**Wiltshire Area Office**

75 Swindon Road, Stratton St Margaret,

Swindon SN3 4PU

01793 836480

Regional Officers

**Alan Tomala**

alan.tomala@unitetheunion.org

**Jim D'Avila**

jim.d'avila@unitetheunion.org

**John McGookin**

john.mcgookin@unitetheunion.org

**Bournemouth Area Office**

Tolpuddle Martyrs House,  
238 Holdenhurst Road,  
Bournemouth BH8 8EG  
01202 294333

Regional Officers

**Bob Lanning**

bob.lanning@unitetheunion.org

**Steve Attwill**

steve.attwill@unitetheunion.org

**Clare Moody**

clare.moody@unitetheunion.org

**Guernsey Office**

Transport House, Commercial Road, St  
Sampsons, Guernsey GY2 4QP  
01481 248 800

Regional Officer

**Bob Lanning**

bob.lanning@unitetheunion.org

**Jersey Office**

66 New Street, St Helier, Jersey JE2 3TE  
01534 872 584

Regional Officer **Nick Corbel**

nick.corbel@unitetheunion.org



**Unity**

The union for the ceramics industry

[www.unitytheunion.org.uk](http://www.unitytheunion.org.uk)

Hillcrest House, Garth Street, Hanley,  
Stoke-on-Trent ST1 2AB

01782 272755

General Secretary **Harry Hockaday**



**United Road Transport Union**

Drivers, warehousing, ancillary workers  
in the logistics and food sectors

[www.urtu.com](http://www.urtu.com)

Southern Office

85 Whiteway Road, St George,

Bristol BS5 7QS

07775 852990

Regional Officer **Malcolm Williams**

malcolm.williams@urtu.com



**Union of Shop, Distributive and Allied Workers**

Retail, distributive, food processing  
and manufacturing, laundries, catering,  
chemical processing, pharmaceutical,  
home shopping, warehouses, insurance  
agents, clerical, milkround and dairy  
process, call centres

[www.usdaw.org.uk](http://www.usdaw.org.uk)

Unit 10, Oak Tree Court, Mulberry Drive,  
Cardiff Gate Business Park, Pontprennau,  
Cardiff CF23 8RS

02920 731131

cardiff@usdaw.org.uk

twitter: @UsdawMedia

Divisional Officer

**Nick Ireland** nick.ireland@usdaw.org.uk

Area Organisers

**Paul Adams** paul.adams@usdaw.org.uk

**Susan David** susan.david@usdaw.org.uk

**Nigel Davies** nigel.davies@usdaw.org.uk

**Peter Evans** peter.evans@usdaw.org.uk

**Bipin Pitrola** bipin.pitrola@usdaw.org.uk

**Rose Bevan** rose.bevan@usdaw.org.uk

**Bristol, Bath, South Gloucestershire,  
Wiltshire and Somerset**

USDaw House, Unit D, Abbeywood  
Business Park, Filton, Bristol BS34 7JU  
0117 961 6061  
bristol@usdaw.org.uk

Deputy Divisional Officer

**Mike Walker** mike.walker@usdaw.org.uk

Area Organisers

**Adrian Collins**

adrian.collins@usdaw.org.uk

**Ron Hemming**

ron.hemming@usdaw.org.uk

**Milan Pavlik** milan.pavlik@usdaw.org.uk

**Adrian Grabarski**

adrian.grabarski@usdaw.org.uk

Lifelong Learning Project Worker

**Christine Worley**

christine.worley@usdaw.org.uk

**Cornwall, Devon and Somerset**

First Floor, Rhin House, 24 William Prance  
Road, Plymouth, PL6 5WR  
01752 765930  
plymouth@usdaw.org.uk

Area Organisers

**John Crick** john.crick@usdaw.org.uk

**Suzanne Green**

Suzanne.green@usdaw.org.uk

**Linda Riggs** linda.riggs@usdaw.org.uk

Recruitment and Development Officer

**Deborah Holland**

deborah.holland@usdaw.org.uk

**Swindon**

The Priory, 6a Newbury Street, Andover  
SP10 1DN

01264 321460

andover@usdaw.org.uk

Divisional Officer

**Jim Carty** jim.carty@usdaw.org.uk

Area Organisers

**Tracey McGregor**

tracey.mcgregor@usdaw.org.uk

**Daniel Knowles**

daniel.knowles@usdaw.org.uk

**Paul Noakes** paul.noakes@usdaw.org.uk

**Mike Parsonage**

mike.parsonage@usdaw.org.uk

**Karen Shone**

Karen.shone@usdaw.org.uk



**Writers' Guild of Great Britain**

Television, radio, film, books, theatre,  
video games and multimedia

[www.writersguild.org.uk](http://www.writersguild.org.uk)

40 Rosebery Avenue,  
London EC1R 4RX

020 7833 0777

admin@writersguild.org.uk

twitter: @TheWritersGuild

General Secretary **Bernie Corbett**



**Yorkshire Independent Staff Union**

Employees of the Yorkshire Building  
Society

c/o Yorkshire Building Society, Yorkshire  
House, Yorkshire Drive, Rooley Lane,  
Bradford BD5 8LJ

01274 472629

General Secretary **Ania Grota**

ahgrota@ybs.co.uk



# SOUTHWEST UNION LEARNING



Unionlearn brings together the training of union representatives and officers with learning for employees in the workplace. Unions are a key channel between workers and learning opportunities. They reach out to new learners and support skills development. Unions are working with learning providers to make sure everyone gets the chance to fulfil their potential.

## unionlearn South West

[www.unionlearn.org.uk](http://www.unionlearn.org.uk)  
Church House, Church Road,  
Filton, Bristol BS34 7BD  
0117 947 0521  
[unionlearnsouthwest@tuc.org.uk](mailto:unionlearnsouthwest@tuc.org.uk)  
[www.unionlearn.org.uk](http://www.unionlearn.org.uk)

## Regional Education

[tucedsw@tuc.org.uk](mailto:tucedsw@tuc.org.uk)  
*twitter:* @tucedsw  
Regional Education Officer  
**Marie Hughes** [mhughes@tuc.org.uk](mailto:mhughes@tuc.org.uk)  
07766 250327  
Education Secretary/Administrator  
**Andy Moss** [amos@tuc.org.uk](mailto:amos@tuc.org.uk)  
Union Development Co-ordinator  
**Ros Etheridge** [retheridge@tuc.org.uk](mailto:retheridge@tuc.org.uk)  
07900 910642

Project Assistants

**Emily Westacott** [ewestacott@tuc.org.uk](mailto:ewestacott@tuc.org.uk)  
**Beth Callinan** [bcallinan@tuc.org.uk](mailto:bcallinan@tuc.org.uk)  
Senior Union Support Officers  
West of England and North Somerset

**Alan Shearn** [ashearn@tuc.org.uk](mailto:ashearn@tuc.org.uk)  
07899 966384

Wiltshire and Gloucestershire  
**Elaine Dobson** [edobson@tuc.org.uk](mailto:edobson@tuc.org.uk)  
07799 880195

Devon, Cornwall and West Somerset  
**Rob Garrett** [rgarrett@tuc.org.uk](mailto:rgarrett@tuc.org.uk)  
07899 966358

Union Support Officers  
Dorset and South Somerset  
**Keith Hatch** [khatch@tuc.org.uk](mailto:khatch@tuc.org.uk)  
07917 415487

Devon and Cornwall  
**Carrie Mann** [cmann@tuc.org.uk](mailto:cmann@tuc.org.uk)  
07771 713467

Regional Projects  
Project Manager  
**Maggie Fellows** [mfellows@tuc.org.uk](mailto:mfellows@tuc.org.uk)  
07766 250843 m 07766 250843

Project Assistant **Sam Mignano-Fricker**  
[smignano@tuc.org.uk](mailto:smignano@tuc.org.uk)

## Cornwall Office

Daniels Lane, Holmbush Industrial Estate,  
St Austell PL25 3HS  
01726 73380

Project Assistant **Jenny Adams**  
[Jadams1@tuc.org.uk](mailto:Jadams1@tuc.org.uk)

## Trade Union Studies Centres

**City of Bristol College**  
Providing courses in Bath, Bristol,  
Taunton and Yeovil.  
[www.cityofbristol.ac.uk](http://www.cityofbristol.ac.uk)  
City of Bristol College, Room D2.18, Davy  
House, Ashley Down Centre, PO Box  
2887, Bristol BS2 2BB  
0117 312 5607



**221,000** people gained new skills thanks to union learning in 2012

**10** years of union learning in the South West

**352** Union Learning Reps trained

**700** Union Learning Reps

**40** union learning centres

Education  
OPPORTUNITIES

125+ I.T.  
numbers

Words >83  
ideas -67  
9

**confidence**

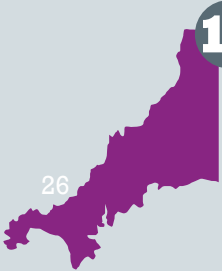
**LEARNING SKILLS**

**2,044** union reps were trained through South West TUC Education in 2012

**10** years of union learning in Cornwall

**350** Union Learning Reps

**£2.7m** EU money for union-led learning



Head of School **Shân Maidment**

TUEdadmin@cityofbristol.ac.uk

Tutors **Carol Wright, Gail Empson, Gill Gillett, Laura Collins, Mike Lamprell, Richard Capps** and **Dave James**

### **New College**

Providing courses in Cheltenham, Gloucester, Swindon

[www.newcollege.ac.uk](http://www.newcollege.ac.uk)

New College, New College Drive, Swindon, SN3 1AH

01793 732 848

Co-ordinator **Mary Scott**

mary.scott@newcollege.ac.uk or

tustudies@newcollege.ac.uk

Tutors **Dave James** and **Gary Puffett**

### **City College Plymouth**

Providing courses in Exeter, Plymouth, Cornwall

[www.cityplym.ac.uk](http://www.cityplym.ac.uk)

City College Plymouth, Goschen Centre, Saltash Road, Keyham, Plymouth PL2 2DP

01752 305 020

Co-ordinator

**John Terry** jterry@cityplym.ac.uk

Tutors **Gary Stent** and **Steve Allen**

### **TUC courses in Dorset**

Interim contact

**Andy Moss** South West TUC Education  
amos@tuc.org.uk 0117 947 0521

### **Union Learning and Education**

#### **ASLEF**

Proud to Educate, Project Worker

**Emma Penman**

emma.penman@aslef.org.uk

020 7317 8600 m 07879 420268

#### **ATL**

South West Learning Organiser

**Sandra Berry** sberry@atl.org.uk

07918 196137

#### **BECTU**

Regional Learning Officer

**Martin Roberts** mroberts@bectu.org.uk

07760 755912

#### **BSU**

Project Worker **Mark Bramwell**

mark.bramwell@wmsl.co.uk

01752 236513 m 07846 459812

National Project Manager **Vikki Botham**

vikki.powell@britannia.co.uk

01538 399627

#### **Equity**

**Jill Lamede**

Jilllamede@aol.com 01840 770817

#### **FBU**

Regional Official **Kevin Herniman**

Kevin.herniman@fbu.org.uk

0117 9355132 m 07870 250297

Learning Organiser **Tim Davis**

tim.davis@fbu.org.uk

#### **GMB**

Regional Officer **Rowena Hayward**

rowena.hayward@gmb.org.uk

0117 9554470 m 07919 187931

Regional Education and Health and Safety Officer

**Alan Fraser** alan.fraser@gmb.org.uk

020 8397 8881 m 07931 421234

Project Manager

**Phil Caiels** phil.caiels@gmb.org.uk

01752 660219 m 07710 618903

Project Workers

**Jude Lazar** Jude.lazar@gmb.org.uk

01752 660219 m 07802 984266

**Peter Synowiec**

Peter.Synowiec@gmb.org.uk  
07552 165 951  
**Agnieszka Zamonski**  
Agnieszka.zamonski@gmb.org.uk  
07552 165951

**PCS**  
Regional Learning & Education Officer  
**Robert Crew** robertc@pcs.org.uk  
01392 410105 m 07734 494765  
Regional Learning Organiser  
**Jack Davies** jack@pcs.org.uk  
01392 410105

**RMT**  
**Bill Hendy** b.hendy@rmt.org.uk  
07581 290611

**Royal College of Midwives**  
Project Worker – South of England  
**Imogen Weekes**  
Imogen.weekes@rcm.org.uk  
07848 014828

**SCP**  
Fund Project Worker  
**Karen Reed** karen@scpod.org  
07909 117743

**TSSA**  
Learning Organiser  
**Nel Andrew** andrewn@tssa.org.uk  
0207 5298033 m 07740 248902

**UCATT**  
Training co-ordinator, South West  
**Graham Harris** graham@ctcswl.co.uk  
01209 823920

**UNISON**  
Regional Education Officer  
**Kay MacKenzie**  
k.mackenzie@unison.co.uk  
0845 355 0845

Education Field Worker  
**Edna Warwick** e.warwick@unison.co.uk  
01823 285 312 (DDI)

**Unite the Union**  
Education  
education.southwest@unitetheunion.org  
Education Organiser **Glyn Conolly**  
glyn.conolly@unitetheunion.org  
02920 394 521  
01275 370000 (Weds and Thurs)  
Regional Learning Manager  
**Stephanie Wring**  
steph.wring@unitetheunion.org  
0117 923 0555 m 07845 992995

Learning Project Workers  
**Ken Fish** kfish@unitetheunion.org  
0117 370 1278 m 07717 570681

**Andy Hewlett**  
andy.hewlett@unitetheunion.org  
t 0117 923 0555 m 07717 858585

**Matt Gillett**  
matt.gillett@uniontheunion.org  
t 0117 923 0555 m 07958 511576

**Nigel Jones**  
nigel.jones@unitetheunion.org  
t 0117 923 0555

**URTU**  
ULF Project Manager **Graham Cooper**  
grahamcurtu@yahoo.co.uk  
07795 562874

**USDAW**  
Education Officer **Marci Wilson**  
Marcia.Wilson@usdaw.org.uk  
02920 731131  
Project Worker **Christine Worley**  
Christine.worley@usdaw.org.uk  
0117 931 9730 m 07717 811457



# **SOUTHWEST TRADES UNION COUNCILS**



Trades Union Councils bring union delegates together at local level. Although independent organisations, they are an important part of the trade union family and help build community links and strengthen solidarity between unions.

## **Barnstaple**

Paul Dyer, 21 Churchill Close, Barnstaple,  
Devon EX32 7HJ  
07815 007424  
barnstaple-tuc@talk21.com

## **Bath**

Robert Brinkworth, 2 Glebe House,  
Widcombe Hill, Widcombe, Bath BA2 6AA  
01225 482781  
robert.brinkworth@virgin.net

## **Bournemouth, Christchurch and Poole**

Shelley Wilson, c/o UNITE 238

Holdenhurst Road,  
Bournemouth BH8 8EG  
info@bcptuc.org  
[www.bcptuc.org](http://www.bcptuc.org)

## **Bridgwater**

Dave Chapple, 1 Blake Place,  
Bridgwater TA6 5AU  
01278 450562  
davechapple@btinternet.com

## **Bristol**

Andy Robertson, 52 Gordon Avenue,  
Whitehall, Bristol BS5 7DS  
0117 951 6584  
a.robertson@rmt.org.uk

## **Cheltenham**

Quentin Tallon, 31 Kipling Road,  
St. Marks, Cheltenham GL51 7DJ  
01242 575071 m 07963 701051  
quentintallon@hotmail.co.uk

## **Devon County Association**

Gerrard Sables, 8 Penrose Square,  
Barnstaple EX32 8NH  
01271 373338 m 0845 3138397  
devoncountytuc@gmail.com

## **Dorchester, Weymouth and Portland**

Tim Nicholls, 32 Canberra Crescent,  
Weymouth, Dorset DT3 6AQ  
01305 837458 w 01305 328189  
m 07817 840104  
timtucouncil@talktalk.net

## **Exeter**

David Smith,  
t 01392 491470  
07720 326698  
e drdev@hotmail.co.uk

## **Gloucester and District**

David James, 10 Glendower Close,  
Churchdown, Glos GL3 1NR  
0784 2969301  
tuglos11@gmail.com

## **Ilfracombe**

Mike Creek, 6 Mount View, Ilfracombe  
EX34 9PD  
01271 866211  
mikecreek@tiscali.co.uk

## **Plymouth**

Sarah Allen-Melvin, 1 Torr View Avenue,  
Plymouth PL3 4QN  
07765 068721  
sarah.allenmelvin@mac.com  
[www.plymouth-tuc.org.uk](http://www.plymouth-tuc.org.uk)  
twitter: @PlymouthTUC

## **Salisbury**

Alison Goodman, 238 Devizes Road,  
Salisbury SP2 7LY  
0750 3941556  
salisburytuc@yahoo.co.uk

## **Somerset County Association**

Dave Chapple, 1 Blake Place,  
Bridgwater TA6 5AU

01278 450562  
davechapple@btinternet.com

## **Swindon**

Nadine Watts, 48 Dunsford Close,  
Swindon SN1 4PN  
01793 535076 m 07595 071381  
nadine.watts@live.co.uk

## **Taunton and West Somerset**

c/o UNISON Office, County Hall,  
Taunton TA1 4DY  
01823 325164  
payneahmadi@btinternet.com

## **Torbay and District**

Barrie Wood, 38 Nelson Rd, Torquay,  
Devon TQ5 8BH  
01803 855340 m 07787 445121  
bcwoodtorbay@gmail.com

## **Weston and North Somerset**

Richard Capps, 2 Barrows Road, Cheddar,  
Somerset BS27 3AY  
0773 9378546  
rickpcs55@btinternet.com  
[www.westontuc.blogspot.com](http://www.westontuc.blogspot.com)

## **White Horse (Wiltshire)**

Rosie MacGregor, 24 Bearfield Buildings,  
Bradford-on-Avon, Wilts BA15 1RP  
01225 865107  
rosiemacgregor@icloud.com

## **Yeovil**

Vivian Willis, c/o Unity Hall, Central Road,  
Yeovil, Somerset BA20 1JL  
07855 320041  
vivianvjw@aol.com  
[www.yeoviltuc.org.uk](http://www.yeoviltuc.org.uk)

# USEFUL CONTACTS

## Equality South West

Dedicated to promoting equality and diversity throughout the South West. Working with partners to tackle discrimination on the grounds of age, disability, gender reassignment, marriage and civil partnership pregnancy and maternity, race, religion or belief, sex or sexual orientation.

Somerset College, Wellington Road,  
Taunton TA1 5AX  
01823 240260

[www.equalitysouthwest.org.uk](http://www.equalitysouthwest.org.uk)

*twitter:* @equality\_sw

## Acas South West

The Waterfront, Welsh Back,  
Bristol BS1 4SB  
08457 383736

Helpline on 08457 474747

[www.acas.org.uk](http://www.acas.org.uk)

## Thompsons Solicitors

Founded in 1921, Thompsons has taken a central role in helping unions to protect the interests of their members.

18 Lawford Street, Bristol BS2 0DZ  
0117 304 2400

The New Union House, 2 Harbour  
Avenue, Plymouth PL4 0BJ  
01752 675810

[www.thompsons.law.co.uk](http://www.thompsons.law.co.uk)

## Simpson Millar <sup>LLP</sup>

20 Church Road, Lawrence Hill,  
Bristol BS5 9JA  
0844 858 3600

[www.simpsonmillar.co.uk](http://www.simpsonmillar.co.uk)

## National Pensioners Convention

Campaigning for dignity, financial security and fulfillment for all older

people across the UK.

Walkden House, 10 Melton Street,  
London NW1 2EJ

020 7383 0388

[info@npcuk.org](mailto:info@npcuk.org)

<http://npcuk.org>

## Regen SW

The leading centre for sustainable energy expertise and pioneering projects helping to build a prosperous low-carbon economy in the South West.

The Innovation Centre, Rennes Drive,  
Exeter, Devon, EX4 4RN  
01392 494399

[mhyman@regensw.co.uk](mailto:mhyman@regensw.co.uk)

[www.regensw.co.uk](http://www.regensw.co.uk)

## Unity Trust Bank

Unity Trust Bank is a specialist bank for civil society, social enterprises, CICs, councils, and trade unions, supporting customers with socially-responsible banking services.

Nine Brindleyplace, Birmingham B1 2HB  
0345 140 1000

[us@unity.co.uk](mailto:us@unity.co.uk)

[www.unity.co.uk](http://www.unity.co.uk)

## South West Forum

The regional voice for the voluntary and community sector.

The Innovation Centre, University of  
Exeter, Rennes Drive, Exeter EX4 4RN  
01392 247901

[admin@southwestforum.org.uk](mailto:admin@southwestforum.org.uk)

<http://southwestforum.org.uk>

*twitter:* @southwestforum

## South West Stakeholders

The network for social partners and civil

# industrial action

160  
140  
120  
100  
80  
60  
40  
20  
0



**135m** days lost to sickness absence

**4.9m** days lost to back pain

**1.39m**

days lost to strikes

**4%**

of workplaces experienced a strike in 2010-11

## What union reps do

Union reps are volunteers elected by the members and trained by their union.



discipline or grievances



health and safety



pay



hours



equal opportunities



staffing levels

**13**

out of **53** TUC unions are affiliated to the Labour Party

Some of the issues reps spent time on

The **TUC** is not affiliated to any political party



society across the region.  
c/o South West Forum

### **Health and Safety Executive**

Wales and South West  
[www.hse.gov.uk](http://www.hse.gov.uk)

### **South West Councils**

Brings together all local authorities in the South West  
Dennett House, 11 Middle Street,  
Taunton TA1 1SH  
01823 270101  
[info@swcouncils.gov.uk](mailto:info@swcouncils.gov.uk)  
[www.swcouncils.gov.uk](http://www.swcouncils.gov.uk)

### **Avon and Bristol Law Centre**

Free legal advice and advocacy for unwaged and low paid people and for people experiencing unlawful discrimination.  
2 Moon Street, Stokes Croft,  
Bristol BS2 8QE  
0117 924 8662  
[mail@abl.org.uk](mailto:mail@abl.org.uk)  
[www.ablc.org.uk](http://www.ablc.org.uk)

### **Labour South West**

4 Emery Road, Brislington, Bristol BS4 5PF  
01179729440  
[southwest@new.labour.org.uk](mailto:southwest@new.labour.org.uk)  
[www.laboursouthwest.labour.co.uk](http://www.laboursouthwest.labour.co.uk)

### **Devon and Cornwall Liberal Democrats**

3 Charles Street, Truro TR1 2PQ  
[info@devon-cornwall-libdems.org.uk](mailto:info@devon-cornwall-libdems.org.uk)

### **Western Counties Liberal Democrats**

covering Bristol, Bath, Somerset, Gloucestershire, Dorset and Wiltshire.  
188 Redland Road, Bristol BS6 6YH  
[info@westerncountieslibdems.org.uk](mailto:info@westerncountieslibdems.org.uk)

### **South West Conservatives**

Unit 2, Oak Tree Arena, Edithmead,  
Highbridge, Somerset TA9 4HA  
01278 794140  
[office@southwestconservatives.org.uk](mailto:office@southwestconservatives.org.uk)  
[www.southwestconservatives.org.uk](http://www.southwestconservatives.org.uk)

### **South West Observatory**

Draws together research, resources and analysis to build a clearer understanding of the issues affecting people living and working in the South West to support and inform policy and decision makers.  
Dennett House, 11 Middle Street,  
Taunton TA1 1SH  
01823-447390  
[enquiries@swo.org.uk](mailto:enquiries@swo.org.uk)  
[www.swo.org.uk](http://www.swo.org.uk)  
*twitter: @swobservatory*

### **South West Health Observatory**

Improving the health of the population in the South West through the collection, monitoring and analysis of data to inform decision-making on health issues.  
Grosvenor House, 149 Whiteladies Road,  
Clifton, Bristol BS8 2RA  
0117 970 6474  
[info@swpho.nhs.uk](mailto:info@swpho.nhs.uk)  
[www.swpho.nhs.uk](http://www.swpho.nhs.uk)

### **Unison Croyde Bay Holiday Resort**

Croyde Bay, Braunton, North Devon  
EX33 1QB  
01271 890890  
[croyde@unison.co.uk](mailto:croyde@unison.co.uk)  
[www.croydeunison.co.uk](http://www.croydeunison.co.uk)

### **CWU Elstead Hotel**

Owned by the Communications Workers Union  
Knyveton Road, Bournemouth BH1 3QP

01202 293071  
info@the-elstead.co.uk  
[www.the-elstead.co.uk](http://www.the-elstead.co.uk)

### **Local Enterprise Partnerships**

Voluntary partnerships between local authorities and businesses to help determine local economic priorities and lead economic growth and job creation. LEPs carry out some of the functions previously carried out by the Regional Development Agency. Trade unions are excluded from the partnerships.

### **Cornwall and the Isles of Scilly Local Enterprise Partnership**

PO Box 723, Carrick House, Pydar Street,  
Truro TR1 9GH  
01872 224214  
info@cornwallandislesofscillylep.com  
[www.cornwallandislesofscillylep.com](http://www.cornwallandislesofscillylep.com)  
*twitter:* @LEPCornwall  
Chair **Chris Pomfret**  
LEP Manager **Mel Richardson**  
mrichardson@cornwall.gov.uk

### **Dorset Local Enterprise Partnership**

County Hall, Dorchester, Dorset DT11XJ  
01305 224254  
[www.dorsetlep.co.uk](http://www.dorsetlep.co.uk)  
*twitter:* @DorsetLEP  
Chair **Gordon Page** CBE  
Key Contact **David Walsh**  
d.walsh@dorsetcc.gov.uk

### **Gloucestershire Local Enterprise Partnership**

6th Floor, Llanthony Warehouse,  
Gloucester Docks GL1 2EH  
01452 328300  
info@glosfirst.co.uk  
[www.gloslep.co.uk](http://www.gloslep.co.uk)  
Chair **Diane Savory**

Key Contact **David Owen**  
David.Owen@glosfirst.co.uk  
*twitter:* @GlosLEP and @GFirstUK

### **Heart of the South West Local Enterprise Partnership**

Devon, Plymouth, Somerset and Torbay  
01752 847135  
info@heartofswlep.co.uk  
[www.heartofswlep.co.uk](http://www.heartofswlep.co.uk)  
*twitter:* @HeartofSWLEP  
Chair **Tim Jones**  
Chief Executive **Chris Garcia**

### **Swindon and Wiltshire Local Enterprise Partnership**

07748 658230  
[www.swlep.biz](http://www.swlep.biz)  
Joint chairs: **Nicky Alberry** (covering Swindon) and **Paul Johnson** (covering Wiltshire)  
Key Contact **Steve Richards**  
steve.richards@swlep.biz

### **West of England Local Enterprise Partnership**

Wilder House, Wilder Street,  
Bristol BS2 8PH  
0117 903 6868  
administrator@westofenglandlep.co.uk  
[www.westofenglandlep.co.uk](http://www.westofenglandlep.co.uk)  
*twitter:* @WofEnglandLEP  
Chair **Colin Skellett**  
Chief Executive **Paul Wilson**  
paul.wilson@westofenglandlep.co.uk

**THE TUC'S CAMPAIGN PLAN**

**GROWTH  
AND A NEW ECONOMY**

**JOBS,  
FAIR PAY AND  
A LIVING WAGE**

**GOOD SERVICES  
AND DECENT WELFARE**

**RESPECT AND  
A VOICE AT WORK**

**STRONG UNIONS**

**South West TUC**

Church House, Church Road,

Filton, Bristol BS34 7BD

0117 947 0521

[southwest@tuc.org.uk](mailto:southwest@tuc.org.uk)

[www.tuc.org.uk/southwest](http://www.tuc.org.uk/southwest)

[@swtuc](https://twitter.com/swtuc)

July 2013

